



23B Roland Avenue
Mount Laurel, NJ 08054
Main: 856-662-5162 • Fax: 856-662-5264
www.cinchseal.com

7500 Series Repair Kit Guide

If you have any questions before you begin your installation please call
1-856-662-5162

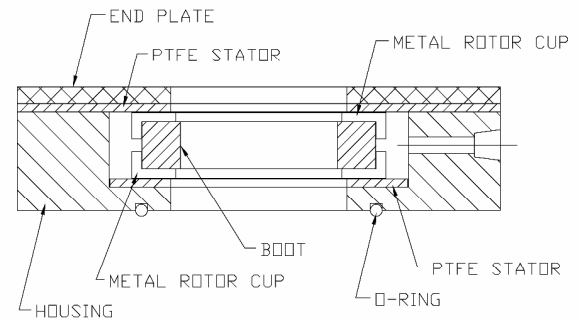
Shaft should be totally clean of any wear, dirt, oils or grease before installing the seal.

Carefully remove seal from shaft.

*Use mild soapy water for lubrication or P-80 Rubber Lubricant Emulsion.

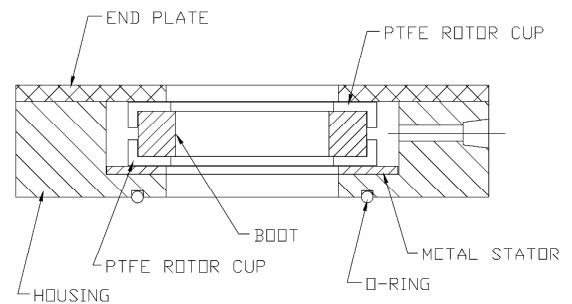
Replacing Internal components for 7520 Seal

Remove cover plate and take out all internal parts
Clean housing and shaft
Align notch in new round PTFE stator to pin in housing
Place boot between 2 metal rotor cups and place in housing
Install square PTFE stator plate
Assemble endplate to housing using screws
Insert new o'ring in housing groove
Install rebuilt seal on to shaft



Replacing Internal components for 7550 Seal

Remove cover plate and take out all internal parts
Clean housing and shaft
Align notch in round metal stator to pin in housing
Place boot between 2 PTFE rotor cups and place in housing
Assemble endplate to housing using screws
Insert new o'ring in housing groove
Install rebuilt seal on to shaft



Housing must be perpendicular – normal to the shaft.

*Alignment of housing to shaft cannot exceed 2°.

*Check and make sure the O'ring at the inboard is seated.

Check for equal spacing around the shaft and the ID of the seal

Tighten mounting hardware.

*Manufacturers recommended torque settings 18ft. lb.

Purge seal before operating

*Purge options: See Installation Guide.

Each seal should have its own dedicated airline. Sharing a single airline between multiple seals is not permitted. Use separate air regulators for each seal.

Maximum operating temperature of the seal to be less than 400°F

Seal housing should be secured to the vessel wall using bolts/nuts and appropriate torques.

